A large architectural rendering of a modern waste-to-energy plant. The building has a distinctive, curved, metallic facade and is situated on a waterfront. In the foreground, a man and a woman are sitting on a grassy bank, looking out at the water where several boats are docked. The sky is overcast with grey clouds.

ARCHITECTURE IN WASTE-TO-ENERGY

BETTINA KAMUK, RAMBOLL



Architecture in WtE In Copenhagen From 1903-2015

From Power Plant to High Profile World Class Realisation



CAN WTE PLANTS BE LIKE THESE FANTASTIC CREATIONS ?



GUGGENHEIM, USA



BURJ ARAB HOTEL,
DUBAI



SYDNEY OPERA HOUSE,
AUSTRALIA

CAN WE DO IT – YES WE CAN !



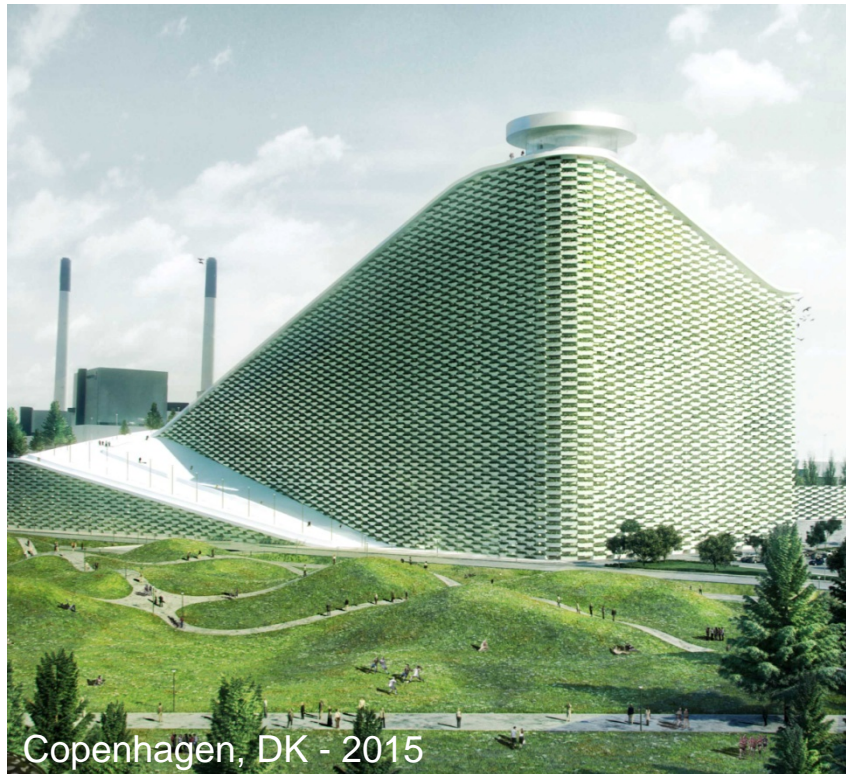
**CAN WE DO IT –
YES WE CAN !**



**CAN WE DO IT –
YES WE CAN !**



CAN WE DO IT – YES WE CAN !



AMAGER LOCATION



EXAMPEL: AMAGER



Architect Competition

- 6 invited high class companies
 - 2 International
 - 2 Danish experienced in WtE
 - 2 Danish

REQUIREMENTS



BASIC

- Climate envelope
- Workers climate
- Good access
- Easy maintenance
- Prepared for expansion
- Payable!
- Possible within the timeframe

ADVANCED

- Visitor centre
- Integrated with recreational activities
- Illustrate openness
- Landmark for the city
- Sublime beacon

GOTTLIEB PALUDAN ARKITEKTER



DOMINIQUE PERRAULT ARCHITECTURE



WILKINSON EYRE ARCHITECTS



3XN



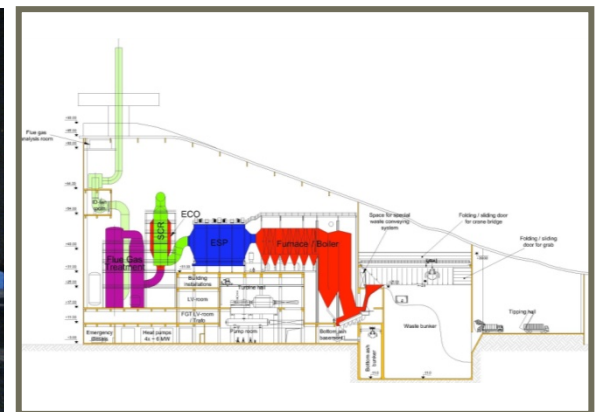
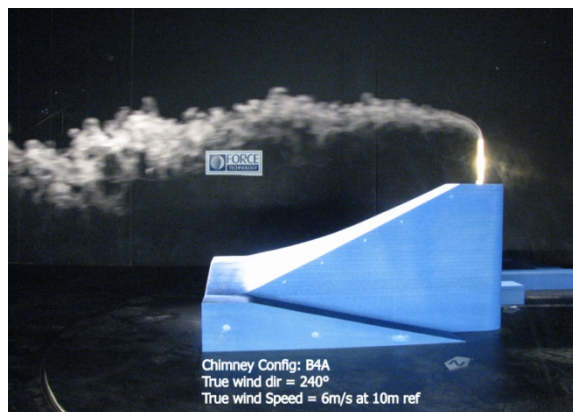
LUNDGAARD & TRANBERG ARKITEKTER



BIG - BJARKE INGELS GROUP



THE WINNER: BIG



THE WINNER: BIG



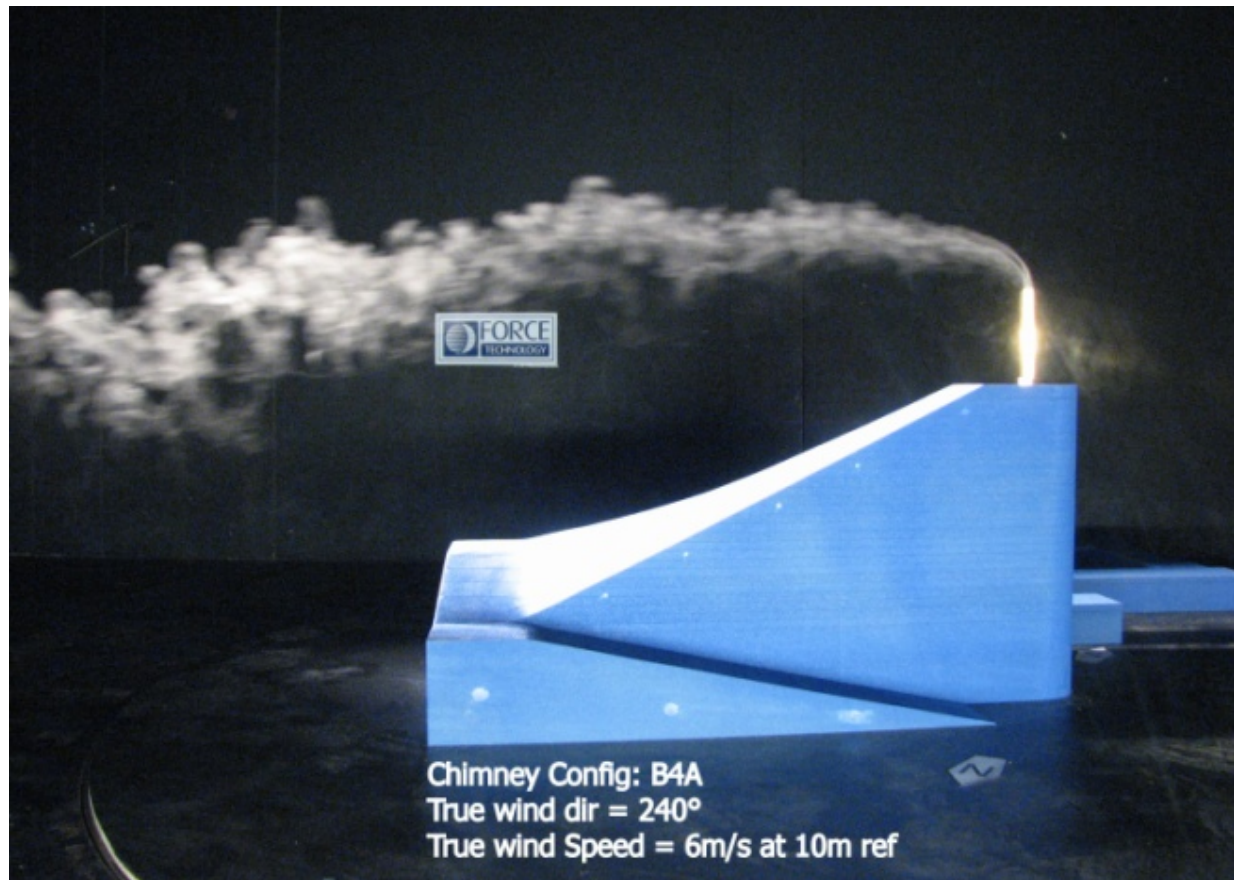
THE WINNER: BIG



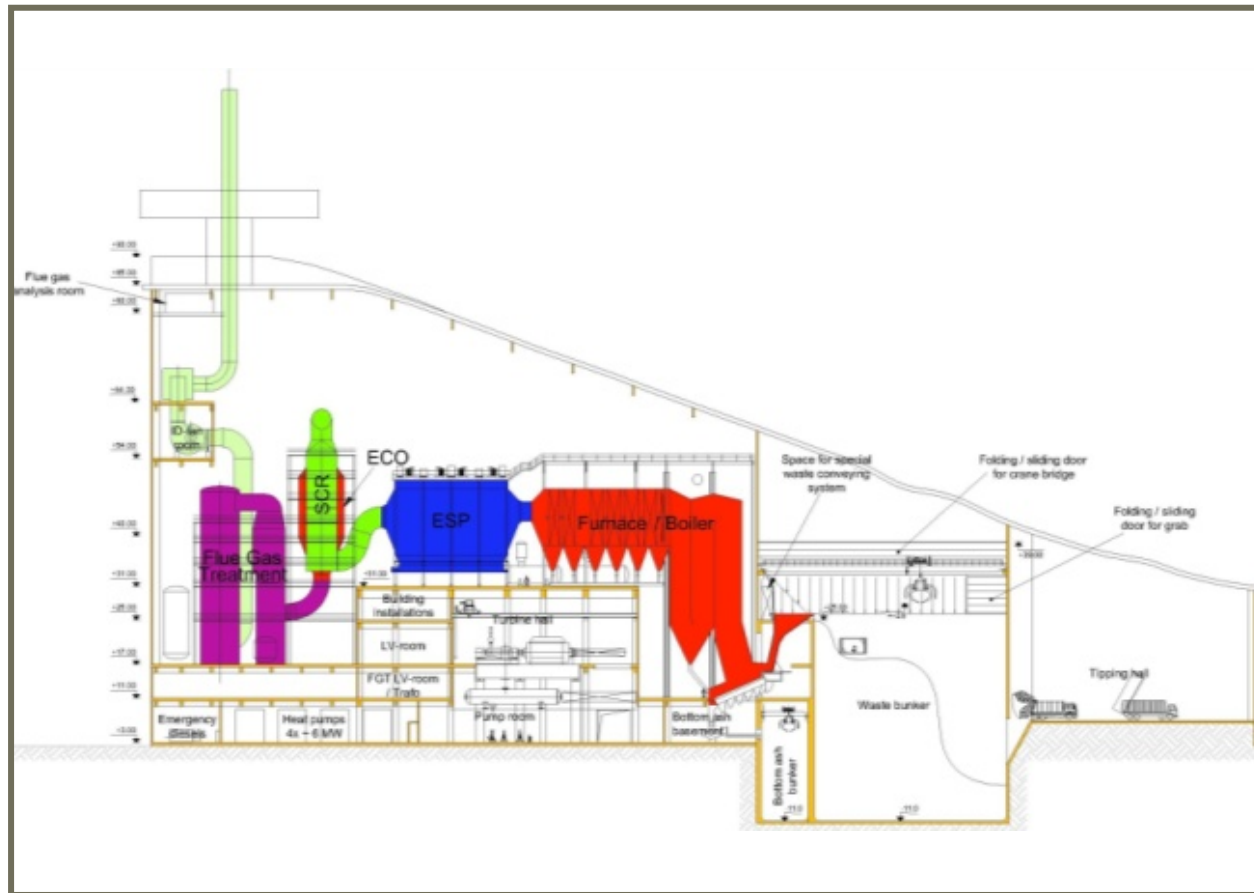
THE WINNER: BIG



THE WINNER: BIG



THE WINNER: BIG



RESULTS



We want to show the world that it is actually possible to produce energy for the city ... and that it is possible to do this in the middle of the city... It is important that the waste-to-energy plant is integrated into the environment... the architecture should be a gift to the city!

=> No opposition from the public





THANK YOU!

**Bettina Kamuk
Ramboll
bkc@ramboll.com**

