

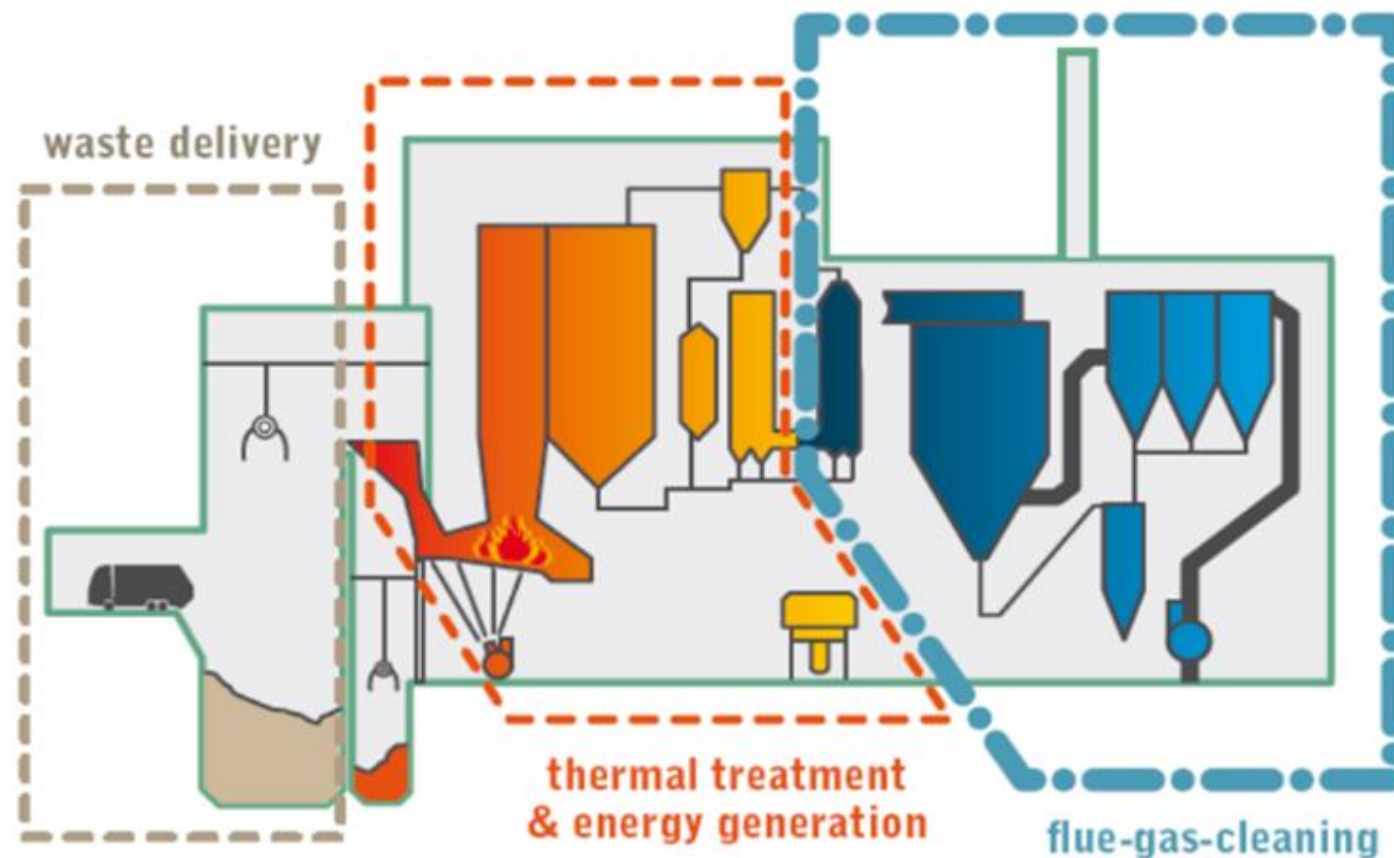
cewep

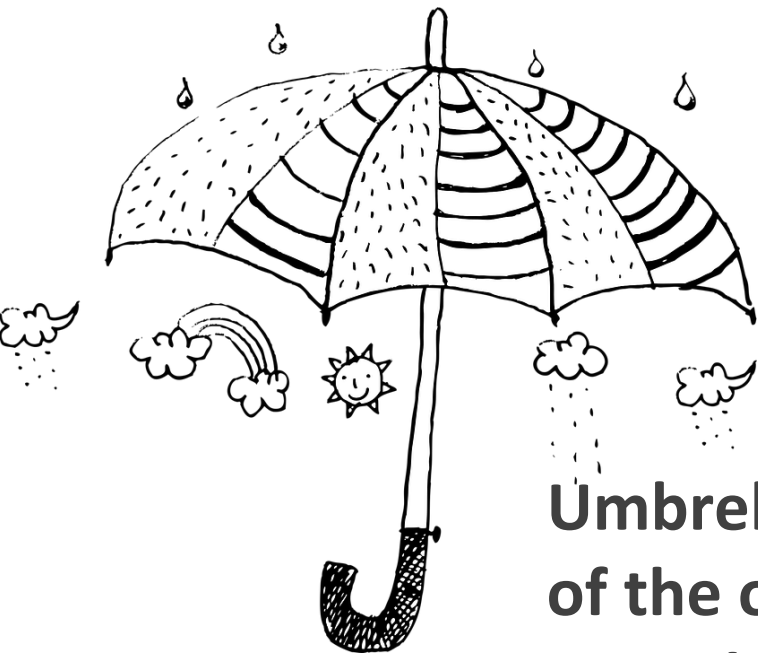
Confederation of European
Waste-to-Energy Plants

Circular Energy – How Waste Contributes to Clean Cities & Mobility

Paul de Bruycker, President of CEWEP/CEO Indaver
Strasbourg, 22nd October 2019

Waste-to-Energy Plant



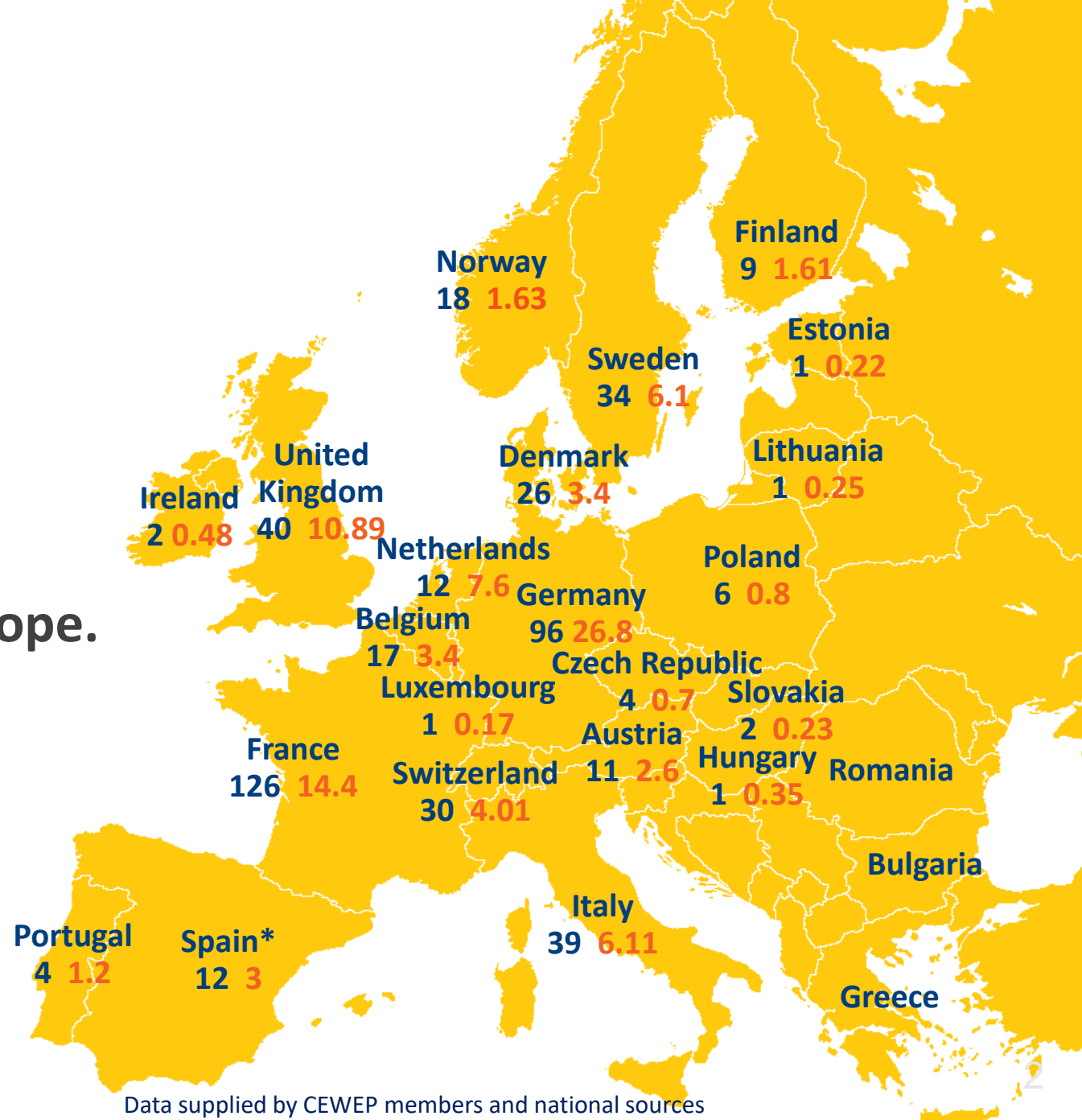


CEWEP

**Umbrella association
of the operators of
WtE Plants across Europe.**

WtE in Europe in 2017

- WtE Plants operating in Europe
(not including hazardous waste incineration
plants) : **492**
- Waste thermally treated in WtE plants
(in million tonnes): **96**



Data supplied by CEWEP members and national sources

* Includes plant in Andorra and SAICA plant



What to do with residual waste in the Circular Economy?



■ ■ The waste concept remains important, also within the CE:

- ■ Residues, used goods, objects without any (subjective) value for the holder should be taken care of
- ■ Waste regulation needs to assure that those materials will not be spread in the environment and will be recovered/reused as much as possible



waste will also exist within the CE

■ ■ The role of waste companies within the CE:

- ■ a logistic role (collect small amounts at different locations and deliver the necessary quantities to the production/treatment sites)
- ■ Pre-treatment in order to remove unwanted and/or hazardous components:
 - ■ inorganic (Hg, As, Cd,...)  treatment and safe sink
 - ■ Organics  WtE

■ ■ Keep the materials clean and safe.



Where are we heading?

Circular Economy targets for municipal waste

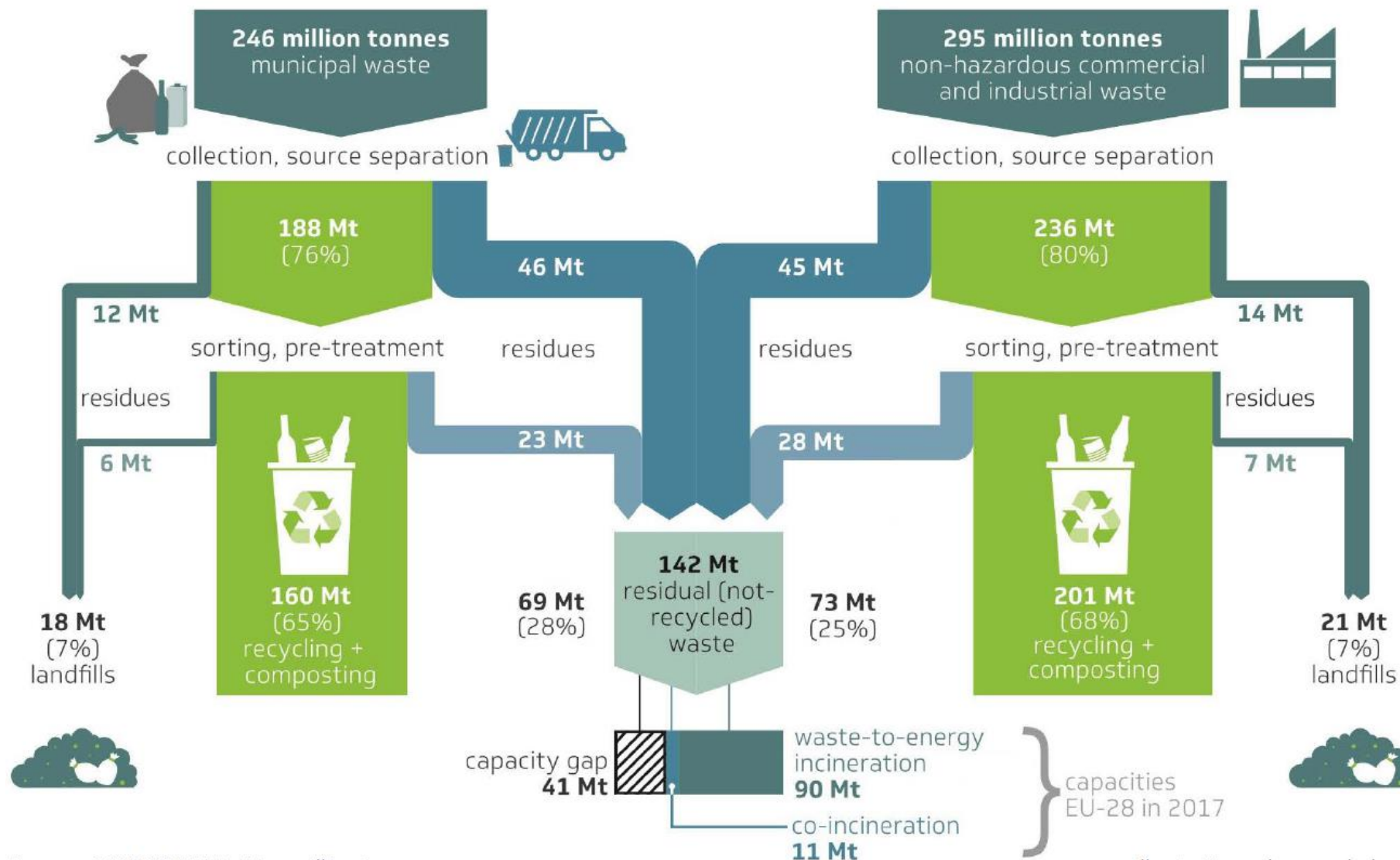
Recycling target  **65%**

Landfill target  **10%**





Residual waste treatment in 2035



Source: CEWEP 2019; Mt = million tonnes

Illustration: ahnenenkel.com



Waste-to-Energy - Enabler of Circular Economy

- ■ Turns non-recyclable waste in an environmentally safe way into secure energy and valuable raw materials;
- ■ Keeps the circle clean by dealing with unwanted organic components in the material cycles (act as a pollutant sink, fulfilling a hygienic task for the society).





Reducing Greenhouse Gases:

- How to decrease greenhouse gas emissions?



More than 153 million tonnes of additional CO₂eq savings could be achieved by:

- Diverting waste that is currently landfilled to quality recycling and Waste-to-Energy
- By substituting fossil fuels used for the generation of energy with Waste-to-Energy



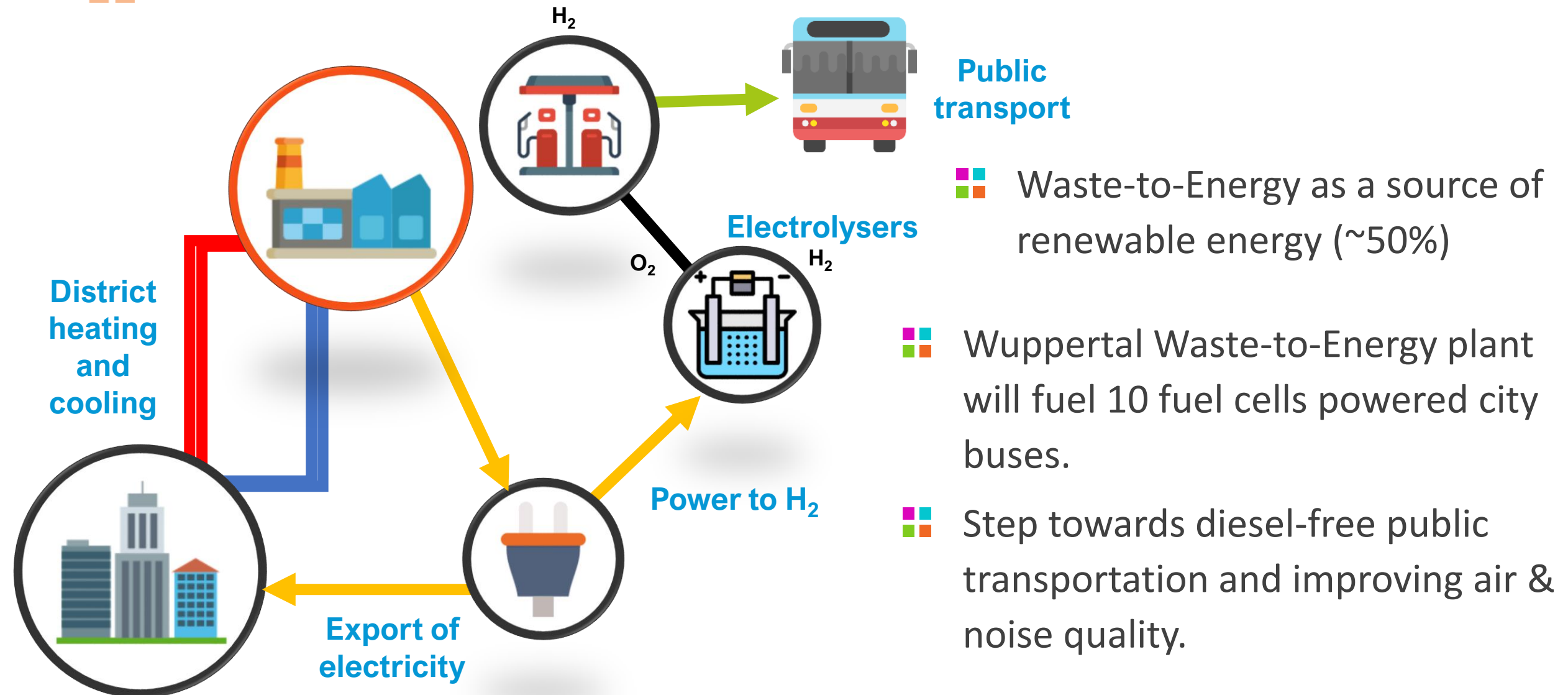
Belgium: Industrial symbiosis in the port of Antwerp



- ■ Energy cluster: steam from Waste-to-Energy to chemical companies
- ■ Sustainable and reliable energy supply for industry
- ■ Important pillar in energy and competitiveness policy of the Flemish government



Germany: Cleaner Air with Hydrogen in Wuppertal

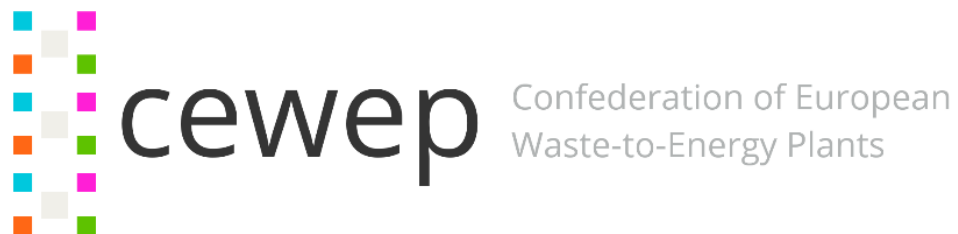




In order to achieve goals the WtE sector needs:

- ■ Debate on the **residual waste** that will still need treatment in 2035.
- ■ Recognition that **WtE goes** hand in hand with **Quality recycling in the EU** and **plays a key role by treating waste that is contaminated with substances** which are not fit for recycling.
- ■ Appropriate **infrastructure linking heat or process steam customers to WtE plants** in order to utilise energy from waste even more efficiently.
- ■ **Recognition of the recycling of the mineral fraction of bottom ash.**
- ■ Future EU waste legislation that sets **targets for landfill diversion**

Thank you for your attention!



Paul De Bruycker

info@cewep.eu

Tel. +32 2 770 63 11

www.cewep.eu

